



Colorado Children's Home

Location(s): United States: Colorado
Project Category(s): Housing & Shelter, Human Services
Project Data Last Updated On: 10 September 2008



A peer-to-peer environment promotes relationships.



Given the support they need, these children can flourish.



Compassion is always at the forefront of our minds.



In a safe environment, kids can relate to others.

Project PROBLEM Statement – What is the problem our organization is trying to solve?

According to the U.S. Department of Health and Human Services, approximately 906,000 children were victims and an estimated 1,500 children died of abuse or neglect last year. Locally, the Colorado Association of Family and Children's Agencies asserts that approximately 30,000 children were reported abused or neglected and referred for investigation in Colorado in 2005. Of those, 11,927 children spent some portion of the year in substitute or foster care. These statistics are only a small sampling of the staggering evidence illustrating the need for alternative housing for children in Denver, Colorado.

Project MISSION Statement – What is our solution to the problem?

Colorado Children's Home provides orphaned and abandoned children a healthy, caring environment while seeking a loving family for them. The home provides a therapeutic, safe place for distressed children to heal and grow. The program also progresses children through various levels of care - vastly improving their chances for lifetime success.



Project CASE Statement – What would happen if our organization did not exist?

Because children need love and families need security, we provide a source of strength and opportunity for children and families in Denver. Through Colorado Children's Home's residential treatment program, we have impacted the lives of many who rely on support and care during times of uncertainty.

Impact-Based Analysis – What is our plan and how will we measure it?

The Impact-Based Analysis (IBA) process, based on the widely acclaimed Logic Model, is the “Industry Standard” for nonprofits to design, monitor and evaluate projects while reporting the impact of their programs to donors. As nonprofits are continuously improving their programs, their IBA’s Activities and Outputs may not always seem on track. These tend to be moving targets and are constantly reevaluated by the nonprofit. IBA Activities and Outputs are not necessarily indicative of a program’s long-term ability to succeed.

The table below shows performance as it relates to the project’s planned indicator goals.

COLORADO CHILDREN'S HOME <i>Measurement Duration: 2007 - 2008</i>				
INPUT (Resources)	ACTIVITY (Action Taken)	OUTPUT (Activity Result)	OUTCOME (Short & Medium-Range Goal)	IMPACT (Long-Range Goal)
Secure safe-house facility for orphanage	Train facility manager and staff	Open safe-house orphanage facility	Facilitate community outreach program	Provide a safe home to needy children in Denver, Colorado
Recruit facility managers and staff	Design facility acceptance criteria	Create admission process	Admit children to home for care and shelter	
Recruit development and behavioral specialists	Design developmental and behavioral treatment plans with specialists	Facilitate behavioral treatment programs 		
Source donations for facility operational costs	Market the orphanage/program to area social workers			
Obtain legal counsel				
KEY:  = Component at Alert Status				

IMPACT-BASED ANALYSIS (IBA) PERFORMANCE COMMENTARY:

The above-depicted IBA was approved by the Regional Director on 10 September 2008. Upon which time, the Program Manager added the following comments explaining the rational behind the challenges in their plan.

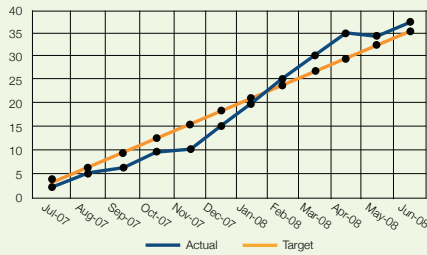
Facilitate behavioral treatment programs - Due to some staffing challenges, we were not able to successfully facilitate and complete the behavioral treatment program as planned. We have since hired another development and behavioral specialist and plan to address the behavioral treatment program again in the coming quarter.

Impact-Based Analysis – Continued

FEATURED INDICATORS

Total **IMPACT** indicators tracked: 1

IMPACT: Provide a safe home to needy children



Indicator Statement:

This indicator measures the program's overall success in providing a safe haven for distressed children.

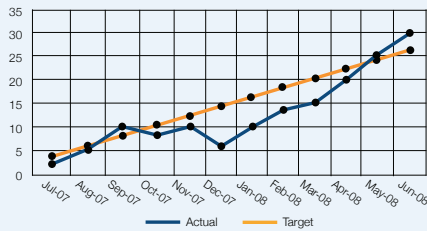
Target Value: **35 children assigned/month**
 Actual Value: **15 children assigned/month**
 Baseline Value: **2 children assigned/month**
 Start Date: **07/01/2007**
 End Date: **12/30/2008**

Comment from last measurement recorded:

Our goal is to provide a safe home for at-risk youth. Through dependable support, education, and behavioral-treatment programs, children are given the tools to be successful. Though we finished 2007 below our baseline goal of 18 children assigned to the program, we later saw this figure increase considerably in the month of April 2008.

Total **OUTCOME** indicators tracked: 9

OUTCOME: Facilitate community outreach programs



Indicator Statement:

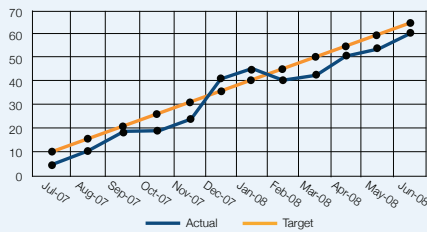
This indicator measures the number of community outreach program's facilitated in a given month.

Target Value: **26 programs facilitated/month**
 Actual Value: **30 programs facilitated/month**
 Baseline Value: **2 programs facilitated/month**
 Start Date: **07/01/2007**
 End Date: **12/30/2008**

Comment from last measurement recorded:

We have designed a community calendar offering various classes and activities in an effort to reduce and prevent child abuse, neglect and other child-rearing dangers. We further hope to provide families with the tools necessary to promote healthy, productive families. We finished 2007 far below our baseline goal of 14 programs offered in a month. We plan to address our milestone values in coming years to account for holiday travel.

OUTCOME: Admit children to home



Indicator Statement:

This indicator measures the number of children admitted to the home for care and shelter in a given month.

Target Value: **65 children admitted/month**
 Actual Value: **60 children admitted/month**
 Baseline Value: **5 children admitted/month**
 Start Date: **07/01/2007**
 End Date: **12/30/2008**

Comment from last measurement recorded:

With the onset of the holidays, we experienced an influx of admissions at the close of 2007. Otherwise, the admission rates have remained somewhat constant.

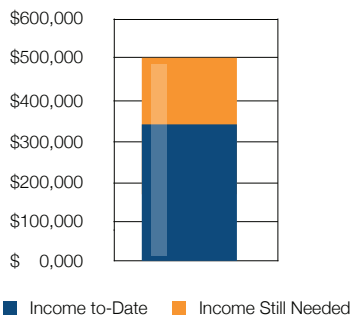
Financial & Program Responsibility – Do we have the capacity to operate responsibly?

Financial and program responsibility are demonstrated through disciplined, effective planning and use of resources. It means the nonprofit has sufficient capacity to achieve their impact goals. Being responsible financially and programmatically is achieved by creating realistic budgets, planning for the right resources with people, processes, facilities, etc. to support the project plan, and ensuring all resources are used as intended. For ongoing success, it is essential to continually evaluate and improve resource planning and optimization to maximize long-term impact.

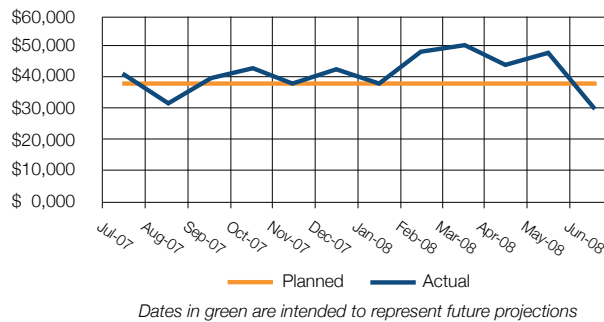
CURRENT PROJECT FINANCIAL SUMMARY

Income Goal:	\$500,000	Updated On:	10 Sep 2008
Income To-Date:	\$347,000	Budget Start Date:	Jan 2008
Income Needed:	\$153,000	Budget End Date:	Dec 2008
Expenses To-Date:	\$387,000	Fiscal Year:	2008

PROJECT INCOME TARGETS



MONTHLY PLANNED VS. ACTUAL EXPENDITURES



GENERAL FINANCIAL PERFORMANCE COMMENTARY

Looking back at our finances since the inception of the project, our expenses have continually exceeded that of our plan by an average of \$7,600 per month, and even more than \$23,000 one month. We plan to make the necessary adjustments to our planned expenses in next year's budget. Conversely, our income has averaged almost \$500 above our planned income per month. However, we still need about \$150,000 to meet our goal of facilitating a community outreach program and covering our program overhead through the end of the year.

Project News

The following information outlines project or sub-project accomplishments and what still needs to be completed, as well as a recent field journal.

ACCOMPLISHMENTS

10 September 2008: Colorado Children's Home has successfully developed the "Stop It Before It Starts" program to reduce and prevent child abuse, neglect and other child-rearing dangers. Through the program, expecting and new mothers receive the vital training and assistance needed to nurture and rear healthy children. With home visiting, parent support, education, and child-development training activities, parents are given the tools to promote healthy, happy and productive families.

WHAT STILL NEEDS TO BE DONE

10 September 2008: We still need to acquire and train advocates in the community to raise awareness of our project. This can be done through fundraising and special events. We hold a number of annual events that would provide ample opportunity to raise awareness, such as our donor recognition luncheon, bake sale and golf tournament.

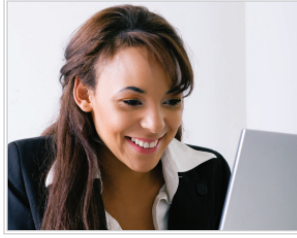
FEATURED FIELD JOURNAL



10 September 2008: We spent a lot of time this summer planning fun activities and outings for the kids, such as a cultural field trip to the Art Museum. Additionally, we recently held a program-wide "Amazing Race" where children competed in running races, a water balloon toss and an obstacle course. We also held the first annual final-four soccer tournament. Our big-picture objective with all these activities is to provide the children a fun, safe outlet for social interaction.

- Journal written by Greg Simpson (Colorado Children's Home program volunteer)

PROGRAM MANAGER: Marcy Hernandez



My Passion: I am dedicated to providing abused and neglected children a healthy, caring environment. Because of my determination to make this vision a reality, I have applied my passion for working with child-placement projects at Trusting Hope Orphanage's Colorado Children's Home.

My Qualifications: My commitment to addressing children's needs span more than 10 years. I have also actively participated in parent education programs since 2000, in addition to having bachelors' and graduate degrees in Human Development and Family Studies from Eastern University.

For more information regarding Newdea's philosophy and methodology behind Impact Achievement, including terminology or rankings, please visit our website at www.newdea.com/about_impact.